

model: **GLARS** 48 m<sup>2</sup>

collection: *BASIC*

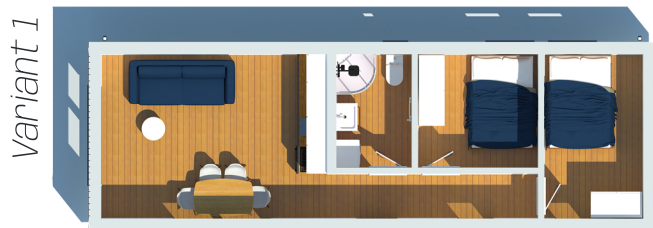
**Basic information**

Building area: 48,00 m<sup>2</sup>

Usable area: 38,5 m<sup>2</sup>

Dimensions: 12m x 4m

- Complete facade and interior finishing
- Kitchen furniture with equipment
- Fully equipped bathroom
- Electric heaters



**LACROMA**  
**HOUSE**™

www.lacroma.pl  
tel. +48 731 601 901  
email: biuro@lacroma.pl



# GLARS BASIC

## Structure

- a home frame made of steel sections with anti-corrosion protection
- additional protection of home bottom with a flat sheet
- a supporting structure made of certified timber C24, structural pieces with a section of 4,5 x 15 [cm]
- inner coating with OSB-3 boards, and waterproof plywood.

## Insulation

- a vapor barrier (vapor retarder),
- a wind-breaker foil
- wall, floor and ceiling insulation - rock wool 15 [cm] thick
- PVC windows (tilt-turn windows, a sliding window in the living room)

## Exterior finishing

- Facade - vifront vinyl siding
- Roofing - steel roofing tiles
- Guttering
- Facade lamps

## Interior finishing

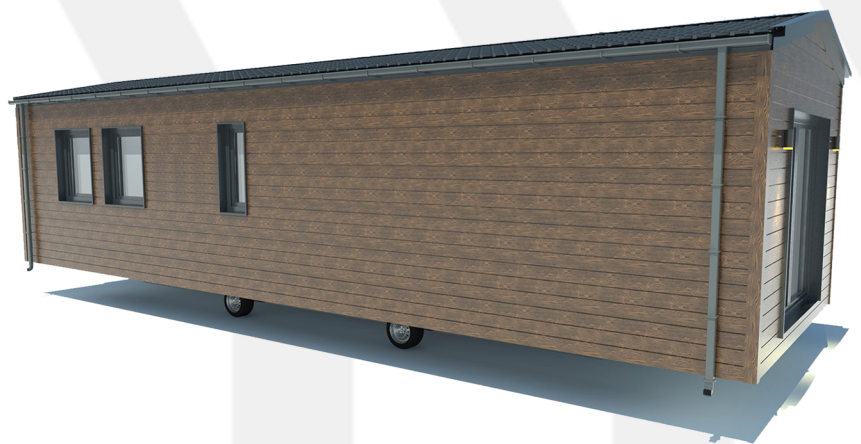
- Flooring - vinyl panels
- White PVC skirting boards
- Walls - MDF wall paneling, Krono Wall Design panels, waterproof VELL wall paneling in the bathroom
- Ceiling - MDF wall paneling
- White interior door

## Installations

- Heating - electric heaters
- A 65-l boiler assuring domestic hot water, equipped with a WiFi module
- A 230V electric wiring system, a connection box
- Water and sewer installation
- Gravity ventilation, mechanical ventilation in the bathroom
- Possible to install an air conditioner
- A washing machine terminal
- Sockets, on/off switches
- Full home illumination

## Equipment

- A fully equipped kitchenette - fridge, dishwasher, oven, induction cooktop, ventilation hood
- Bathroom equipment - lavatory, shower cubicle, washbasin, LED mirror, boiler, „ladder-type“ electric heater



**LACROMA**  
**HOUSE™**

www.lacroma.pl  
tel. +48 731 601 901  
email: biuro@lacroma.pl